

CLEARFIL™ SE BOND 2

THE GOLD STANDARD JUST GOT BETTER

Now a truly future proof universal adhesive,
even for bulk-fill restorations



THE GOLD STANDARD MADE FUTURE PROOF

"CLEARFIL™ SE BOND" has already established itself as the Gold Standard of adhesive dentistry and now we present "CLEARFIL™ SE BOND 2" a two-step, self-etch, light-cure bonding agent. In addition to offering outstanding marginal sealing and virtually no postoperative sensitivity, it comes with an improved catalyst system for stronger bonds and a new dual-cure activator for use with all indirect restorations and core build-up composites.

WIDE INDICATION RANGE

- ✓ Direct restorations using light-cured composite resin
- ✓ Cavity sealing as a pretreatment for indirect restorations
- ✓ Treatment of exposed root surface
- ✓ Treatment of hypersensitive teeth
- ✓ Intra-oral repairs of fractured restorations
- ✓ Post cementation using a dual- or self-cured composite resin
- ✓ Core build-ups using a light-, dual- or self-cured core material
- ✓ Cementing inlays, onlays, crowns, bridges and veneers using a composite resin cement

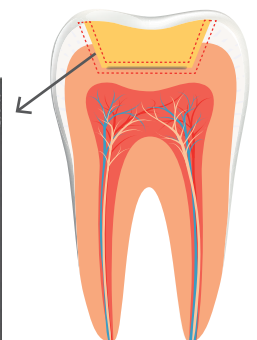
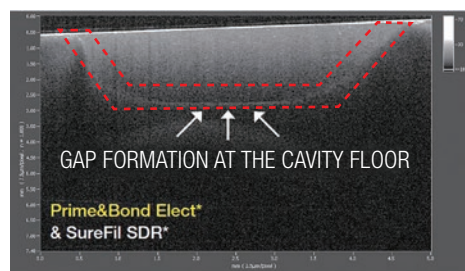
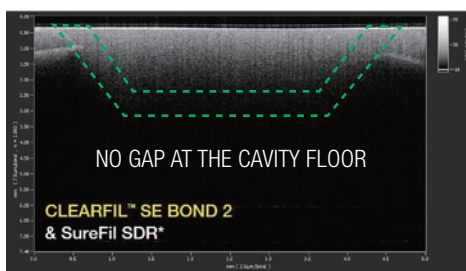


IDEAL FOR BULK-FILL COMPOSITES, REDUCES GAP FORMATION

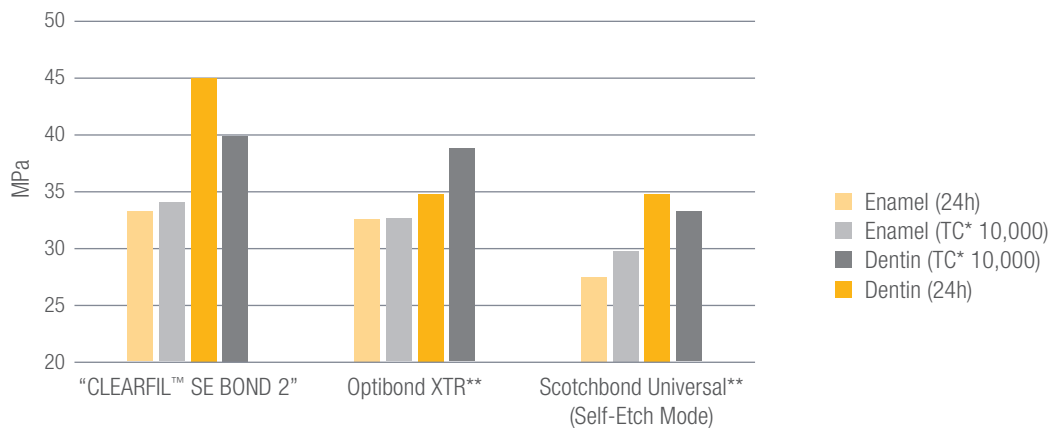
“CLEARFIL™ SE BOND 2” has excellent initial bond strengths to dentin (thanks to the original MDP adhesive monomer) and the ideal adhesive layer to withstand the increased polymerization stress with bulk-fill composites. This ideal combination helps to reduce GAP formation in the dentin margins when bulk-fill composites are used¹.

Optical coherence tomography (OCT) provides real time cross-sectional images that can be used for quantitative and qualitative assessment of the composite restorations, thereby identifying gaps at the adhesive interface (visualized as a white line).

Gap formation at the cavity floor with other bonding agents



TENSILE BOND STRENGTH TO TOOTH STRUCTURE AFTER 10,000 THERMAL-CYCLING²



* Not a trademark of Kuraray Noritake Dental Inc. ** TC: Thermal-Cycling

1. OCT Images courtesy of Dr. Sadr and Professor Dr. Tagami, University of Washington and Tokyo Medical and Dental University.

2. Source: Data courtesy of Dr. J. Burgess, University of Alabama at Birmingham, U.S.A.

MIX IT WITH “CLEARFIL™ DC Activator”:

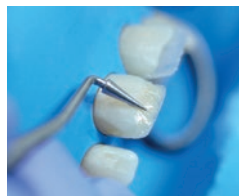
WIDE CLINICAL INDICATIONS AND LOWER FILM THICKNESS

“CLEARFIL™ SE BOND 2” is indicated for direct restorations, intraoral repairs, treatment of exposed root surfaces and hypersensitive teeth.

When “CLEARFIL™ SE BOND 2” Bond is mixed with “CLEARFIL™ DC Activator”, it provides a dual-cure chemistry, ideal for bonding indirect and core build-up restorations.



Direct Application



Direct Restoration



Intraoral Repair



Mix BOND with
“CLEARFIL™ DC Activator”



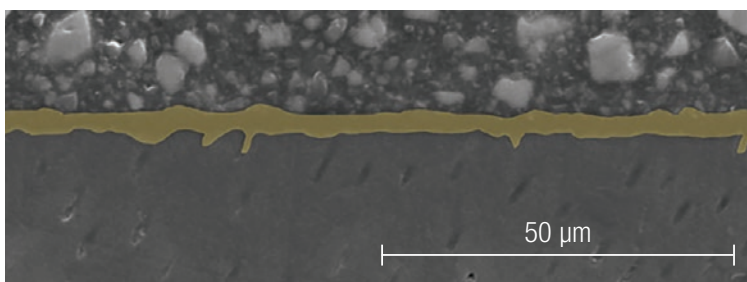
Post Cementation
Core Build-Up



Cementation
Indirect Restoration

Additionally, mixing just 1 drop of “CLEARFIL™ SE BOND 2” Bond with 1 drop of “CLEARFIL™ DC Activator” will provide a low film thickness for indirect restorations.

The film thickness of the mixture after air-drying is approximately 3-5 μm , letting you cement prosthetics that fit best.

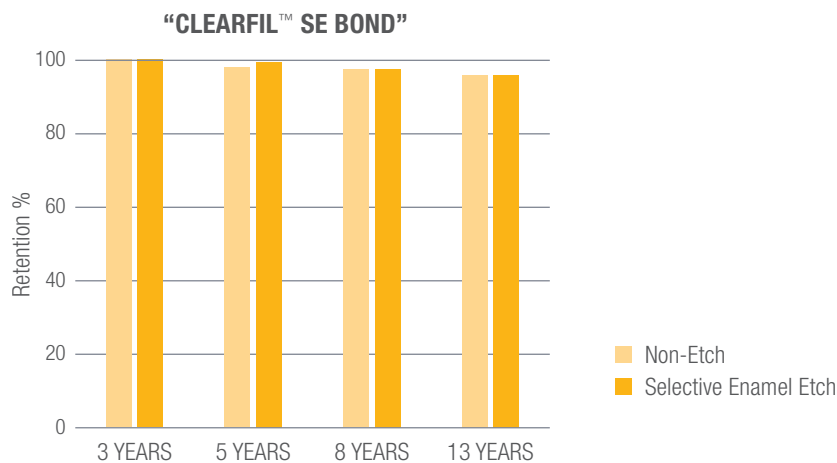


“CLEARFIL™ SE BOND 2” low film thickness when mixed with “CLEARFIL™ DC Activator”

OUTSTANDING LONG-TERM CLINICAL BENEFITS AND RESEARCH RESULTS

“CLEARFIL™ SE BOND 2” is the successor of “CLEARFIL™ SE BOND”, which has an exceptional long-term clinical research history with cervical erosion and class-V restorations. The graph below shows the results of a clinical study ranging from 3-year to 13-year recalls with retention rates of 96% to 100%¹.

Apart from the **excellent long-term marginal sealing**, it also inherits from “CLEARFIL™ SE BOND” excellent characteristics such as: **virtually no post-operative sensitivity** and **low technique sensitivity**.



NEW CATALYST CHEMISTRY: EVEN STRONGER BOND STRENGTHS

The new photo-initiators generate more radicals when curing which relates to higher monomer conversion rates resulting in 21% higher dentin bond strength² compared to gold standard “CLEARFIL™ SE BOND”.

1. Thirteen-year randomized controlled clinical trial of a two-step self-etch adhesive in non-carious cervical lesions. Dent Master 2015
Peumans M, De Munck J, Van Landuyt K, Van Meerbeek B
2. Source: Kuraray Noritake Dental Inc.

BASIC PROCEDURES

DIRECT RESTORATION

Follow the standard procedure for isolation, moisture control, cavity preparation and pulp protection.



Apply PRIMER¹



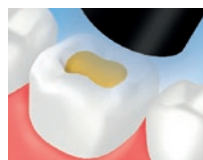
Dry with mild air



Apply BOND



Make a uniform bond film using a gentle airflow



Light-cure²



Place composite resin

INDIRECT RESTORATION

Cementating inlays, onlays, crowns, bridges and veneers using a composite resin cement.

Clean and dry the tooth surface, then trial fit the prosthetic restoration.

For surface preparation of prosthetic restorations, follow the **Instructions for Use** of the restorative material



Apply PRIMER³



Dry with mild air



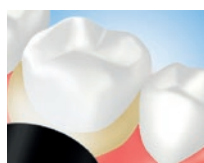
Apply the mixture of BOND and "CLEARFIL™ DC Activator"



Dry with mild air⁴



Cement using a resin cement



1. Before applying PRIMER, selective enamel etch by phosphoric acid is an option.
2. Refer to the table for light-curing time in the Instructions for Use.
3. Before applying PRIMER, selective enamel etch by phosphoric acid is an option.
4. Light-curing the mixture is an option for optimum performance.

ORDERING INFORMATION

“CLEARFIL™ SE BOND 2” KIT

#3270-EU

1 PRIMER (6ml), 1 BOND (5ml)

1 Mixing dish

1 Light-blocking plate

1 Outer case and

Applicator brushes (fine 100 pcs)



“CLEARFIL™ SE BOND 2” VALUE PACK

#3272-EU

3 PRIMER (6ml) and 3 BOND (5ml)

“CLEARFIL™ SE BOND 2” BOND

#3281-EU

1 BOND (5ml)



“CLEARFIL™ SE BOND 2” PRIMER

#3282-EU

1 PRIMER (6ml)



“CLEARFIL™ DC Activator”

#3250-EU

1 Activator (4ml)





EU Importer

Kuraray Europe GmbH

Philipp-Reis-Strasse 4,
65795 Hattersheim am Main, Germany

Phone +49 (0)69 305 35 835

Fax +49 (0)69 305 98 35 835

www.kuraraynoritake.eu

centralmarketing@kuraray.com

- Before using this product, be sure to read the Instructions for Use supplied with the product.
- The specifications and appearance of the product are subject to change without notice.
- Printed color can be slightly different from actual color.

"CLEARFIL" is a trademark of KURARAY CO., LTD.



Kuraray Noritake Dental Inc.

1621 Sakazu, Kurashiki, Okayama 710-0801, Japan
Website www.kuraraynoritake.com



MKA00586